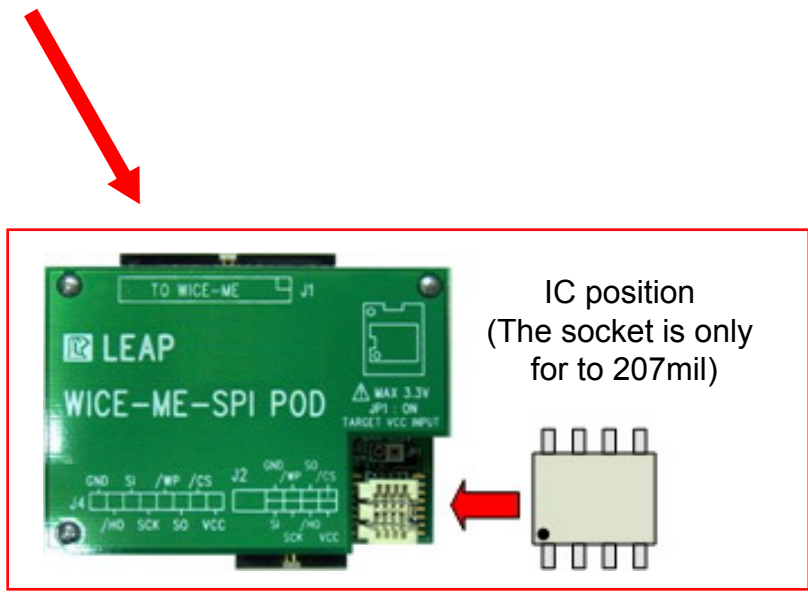
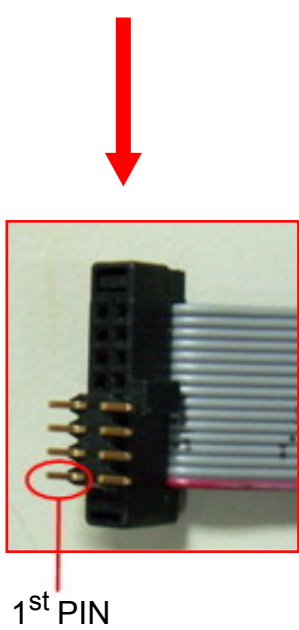


SOUNDS OF THE FUTURE

WICE-ME User's Guide

§ WICE-ME User's Guide §

WICE-ME-SPI Hardware Connection

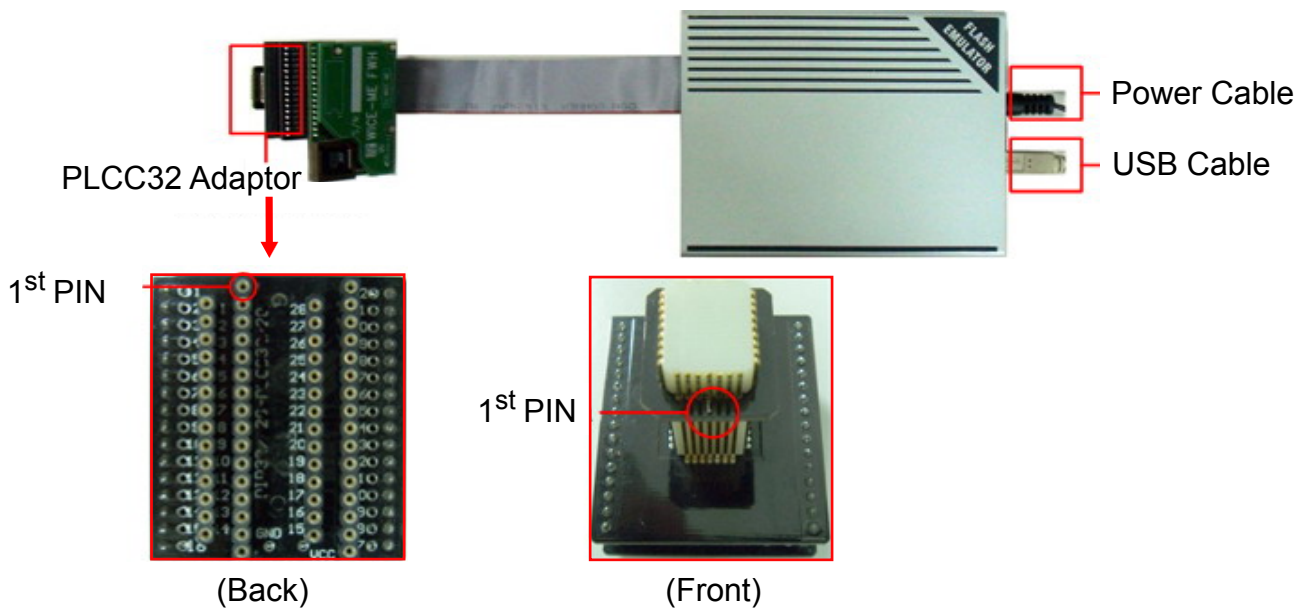


§ WICE-ME User's Guide §

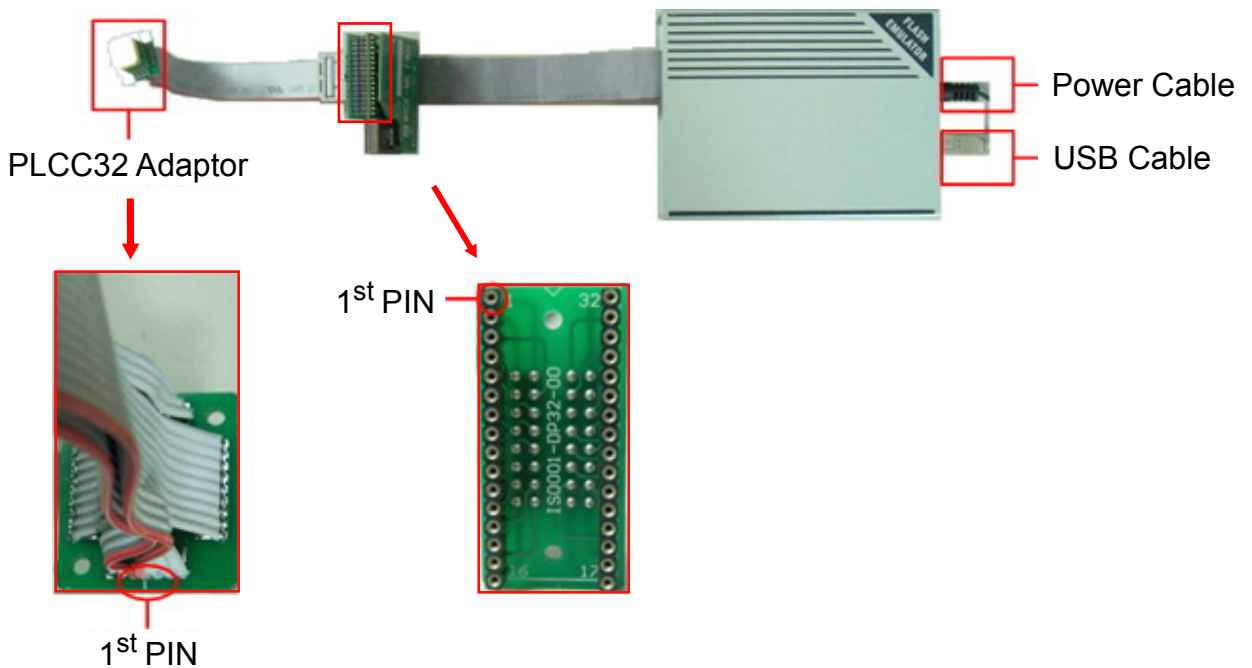
WICE-ME-FWH Hardware Connection

Please must pay attention on the 1st Pin connection.

1. Hard Type Adaptor

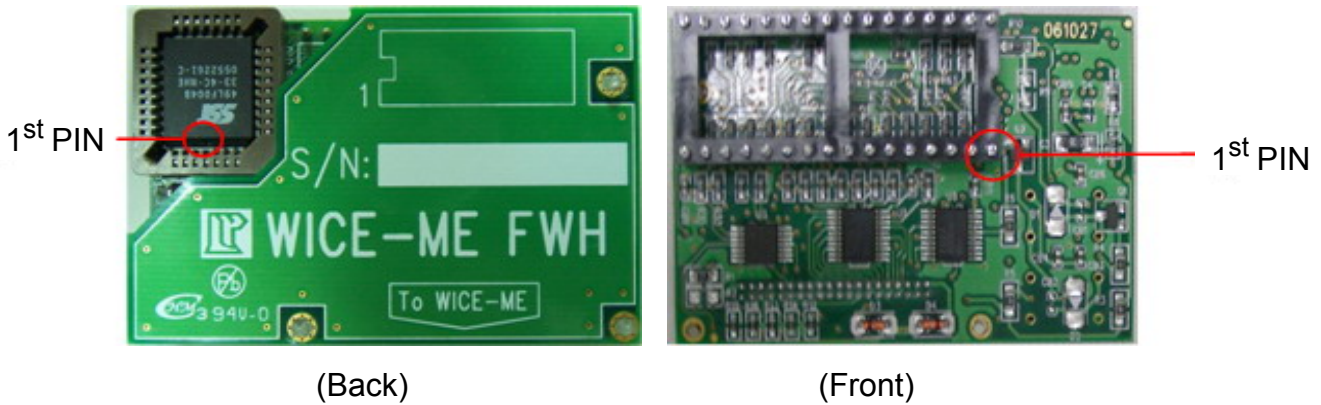


2. Flat Cable Adaptor

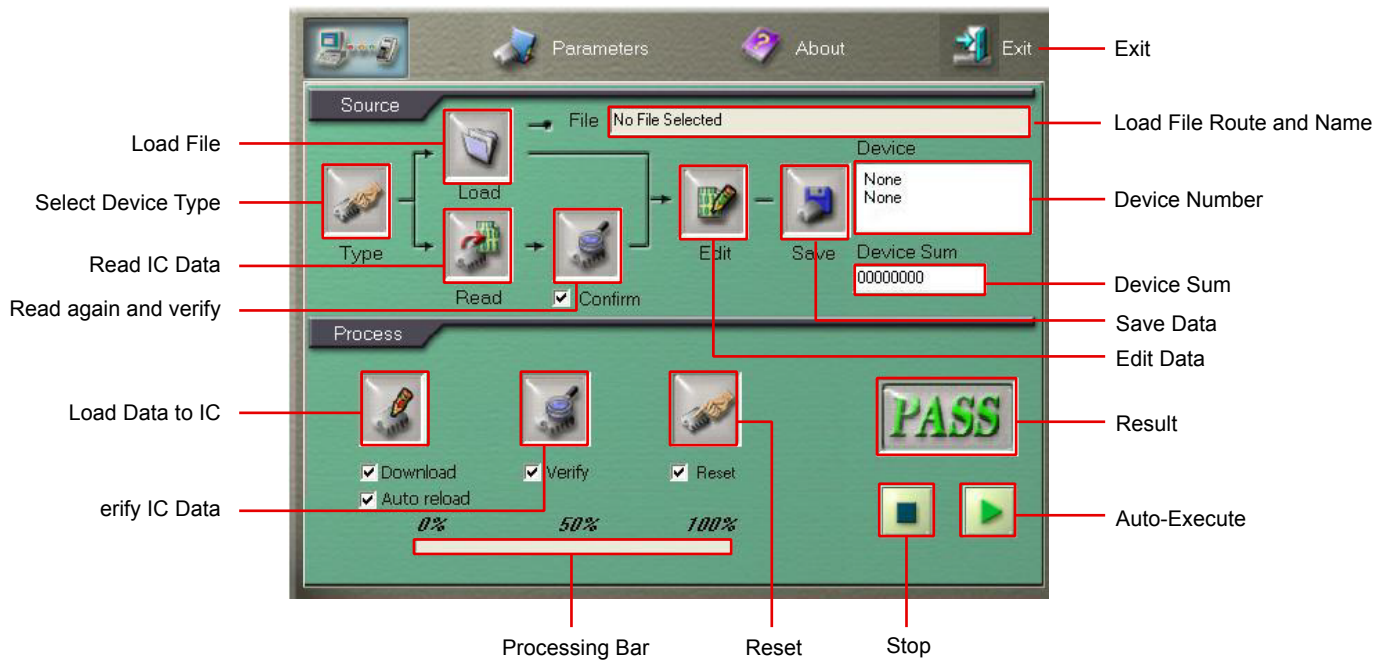


§ **WICE-ME User's Guide** §

WICE-ME-FWH POD illustration :



Operating Introduction



Operating Step:

- Step1: Select device.
- Step2: Execute Load and Read File for checking the checksum.
- Step3: Select function(Such as : Download, Verify, Reset, etc...).
- Step4: Select Auto-Execute.
- Step5: Start emulating if the result displays PASS.